



REMOTE ANNUNCIATOR RA 900

RA 900 Remote Annunciators can be utilized within a facility to remotely monitor and control Thomson Power Systems TS 870 & TS 880 Series of Automatic Transfer Switches. The RA 900 annunciator is available in two hardware configurations; a 7" or 17" Color Touch-Screen display. Both models are 24V DC powered and utilize Modbus™ TCP communication protocol to interface with the Automatic Transfer Switch.

The **RA 900** can be used to remotely monitor and control up to 8 Automatic Transfer Switches concurrently which are located at a single customers site using an Ethernet LAN network.



ADVANCED FEATURES:

- Simplified communication hardware set-up on sites with single ATS
- Monitor up to 8 Automatic Transfer Switches
- Configurable to Standard ATS or Dual Source application
- Remote control and alarm acknowledgment on connected ATS
- Flush mount standard, optional surface mount enclosure available for wall mounting
- Password protected control functions
- Remote Peak Shave - Transfer from S1 to S2

GENERAL DESCRIPTION

The graphical user interface screen provides easy to use browsing of the following detailed information on the remotely connected transfer switch. The RA 900 Remote Annunciator communicates with up to 8 transfer switches using the EMB-TCP/IP communications protocol.



Remote Monitoring Features	
• ATS Power Mimic Bus	• Alarm/Fault Status
• ATS Position (Load on Utility/Load on Generator)	• Active Alarms/Alarms History
• Source Available Status	• ATS Configuration/Firmware Info
• ATS Operating Mode (Auto, Off, Manual, Test)	• Site View (All Connected ATS)
• Source & Load AC Voltage & Frequency Analog Data	• ATS Timer Countdowns
• Load Bus Power Metering Data (kW, KVA, PF)*	

*ATS must be equipped with Load Bus Power Metering (LPM) option

The Transfer Switch can be remotely controlled via the Remote Annunciator. The following remote control features are provided:

Remote Control Features	
• Alarm Reset	• Timer Bypass
• ATS Mode (Auto, Off, Manual, On Load Test, Off Load Test)	• Remote Utility Power Failure Simulation Test

SPECIFICATIONS

Item	RA 900-7	RA 900-17
Color Touch-Screen Models		
Color Touch-Screen Display Size	7"	17"
Screen Resolution	800 x 480 Pixel	1280 x 1024 Pixel
Annunciator External Dimensions (h x w x d)	200 x 146 x 42.5 (mm) 7.8 x 7.4 x 1.67 (inches)	452 x 356 x 115 (mm) 17.8 x 14.0 x 4.5 (inches)
Annunciator Weight	850 grams 10.0 oz	12 kg. 26.4 lbs.
External Power Supply	24Vdc +-20% 250mA, Class 2	24Vdc +- 5% 9.5A, Class 2
Communication Hardware*	Ethernet TCP/IP 10BaseT	Ethernet TCP/IP 10BaseT
Communication Wiring	Ethernet CAT 5E, RJ-45	Ethernet CAT 5E, RJ-45
Operating Temperature	0 Deg C to +45 Deg C	-10 Deg C to +50 Deg C
Storage Temperature	-20 Deg C to +60 Deg C	-20 Deg C to +60 Deg C
Front Panel Environmental Rating	IP65	IP65
Operating and Storage Humidity	10-90% RH non-condensing	10-90% RH non-condensing

Note: Customer to supply the following items for a complete working system

- All Ethernet communication wiring to/from ATS
- Ethernet switches (as required)
- Maintained 24Vdc control power



TYPICAL REMOTE ANNUNCIATOR CONNECTION DIAGRAM

RA 900 Remote Annunciator



24Vdc Power Input



Ethernet TCP/IP LAN Network

Ethernet Switch (required for Sites with multiple ATS's)



Automatic Transfer Switch with TSC 900 Controller



ATS* #1



ATS* #2



ATS* #8

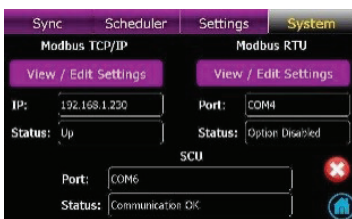
*The RA 900 Remote Annunciator communicates with up to 8 Transfer Switches using the EMB-TCP/IP communications protocol. The EMB-TCP/IP option will be enabled on Transfer Switches at no charge, only at the time of annunciator purchase.

TSC 900 CONTROLLER

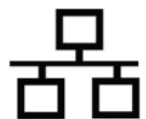


The Thomson Power Systems TSC 900 Transfer Switch Controller utilizes the latest advancements in microcontroller technology, surface mount printed circuit board assembly and advanced programming firmware for control of Automatic Transfer Switches. The TSC 900 is the fourth generation of microcontroller-based Transfer Switch Controllers from Thomson Power Systems, and reflects over 40 years of Transfer Switch control experience.

The TSC 900 is factory configured to monitor, display and control all operational functions of the Automatic Transfer Switch. All voltage sensors and timers are fully user adjustable from the door mounted color touch screen operator interface panel. The unique integrated design allows the controller to be utilized for wide range of applications without use of external modules or optional components.



Touch Screen Display





Thomson Power Systems

9087A - 198th Street

Langley, BC, Canada V1M 3B1

Customer Service: 604-888-0110

info@thomsonps.com

www.thomsonps.com



NOTE: Specifications subject to change without notice.

APPLICATION CONSIDERATIONS

The proper selection and application of power generation products and components, including the related area of product safety, is the responsibility of the customer. Operating and performance requirements and potential associated issues will vary appreciably depending upon the use and application of such products and components. The scope of the technical and application information included in this publication is necessarily limited. Unusual operating environments and conditions, and other factors can materially affect the application and operating results of the products and components and the customer should carefully review its requirements. Any technical advice or review furnished by Regal Beloit America, Inc. and its affiliates with respect to the use of products and components is given in good faith and without charge, and Regal assumes no obligation or liability for the advice given, or results obtained, all such advice and review being given and accepted at customer's risk.

For a copy of our Standard Terms and Conditions of Sale, Disclaimers of Warranty, Limitation of Liability and Remedy, please contact Customer Service at 1-888-888-0110. These terms and conditions of sale, disclaimers and limitations of liability apply to any person who may buy, acquire or use a Regal Beloit America Inc. product referred to herein, including any person who buys from a licensed distributor of these branded products.

Thomson Power Systems and Regal are trademarks of Regal Beloit Corporation or one of its affiliated companies.

©2016, 2017 Regal Beloit Corporation, All Rights Reserved. CL081r0 17/03/10

