



6312 S. 39th West Avenue • P.O. Box 9310 • Tulsa, OK 74157-9310  
Tel: 918.445.5366 • Fax: 918.445.2857  
[www.amercool.com](http://www.amercool.com)





For over 15 years, Amercool has grown rapidly to become a leading manufacturer of air-cooled heat exchangers for the gas compression, landfill gas and power generation markets. We continually strive to enhance our quality to meet the wide range of specific customer requirements. Our technologies and procedures underscore our commitment to excellence, product quality, expert engineering and complete customer satisfaction.

#### FACILITIES AND CAPABILITIES

Our facilities are located in Tulsa, Oklahoma, covering 70,000 square feet of total manufacturing capacity on twenty-two acres of property. We offer a wide range of custom built units including:

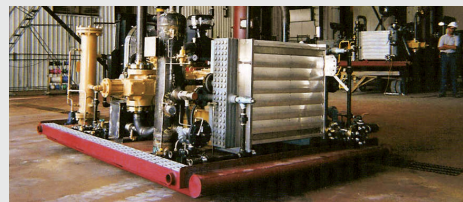
- Motor-driven horizontal units (forced & induced draft)
- Engine-driven horizontal units (forced draft)
- Engine-driven vertical units (forced & induced draft)
- Motor-driven vertical units (forced & induced draft)

These units have fan diameters ranging from 24" to as large as 168". Pressure sections are ASME code-compliant and can be designed for pressures from 150 to 11,150 PSIG.

We produce L-tension, embedded and extruded finned tubes as well as plug-box and split-plug-box headers. Amercool uses SA-516 grade 70 plate as a standard for the header boxes, but can fabricate in stainless steel or other metal alloys as well.

#### DELIVERING VALUE FROM INITIAL PROPOSAL TO POST INSTALLATION

Amercool's dedicated staff of chemical and mechanical engineers design and submit your proposal using our in-house rating program, which has been time tested in the industry. The program thermally and mechanically designs the cooler and accurately estimates the cost of labor and materials. We use a leading process simulator – HYSIM – to calculate the properties and thermal data when our customers do not have this information readily available.



We can prepare accurate price and delivery estimates for most of our standard designs within minutes of receiving an inquiry. When the customer provides site conditions, these designs include consideration of such factors as:

- Wind loads
- Seismic loads
- Nozzle loads

#### Our proposals provide comprehensive information about the cooler including:

- Detailed drawings in English & metric measurements
- Specification sheets per API 661
- ASME header calculations
- Welding procedures
- Accurate price and delivery estimates

Your Amercool product includes many value-added features such as galvanizing and bolted construction, features that most other companies would consider chargeable upgrades. We expect our coolers to perform under the most extreme conditions such as the freezing winters in Russia, the arid deserts of the Middle East and the rough seas and salt air of offshore facilities.

We maintain a comprehensive database containing all of the specifications for every cooler we have ever built. If you need to order replacement parts, we can instantly access and provide the exact parts required.

The highly automated purchasing system includes a database of the material costs provided to us by our critical suppliers. Our affiliation with Smithco Engineering enables us to collectively purchase the largest volume of materials at the most competitive cost. We therefore have strategically and carefully selected to partner with only those vendors who offer top quality materials. Our system enables us to provide firm competitive proposals, not just tentative estimates.

#### EXPERIENCE AND STABILITY

Our senior engineering and production staff has the expertise to design and manufacture products in accordance with API 661, AWS, ASME, AISC and TEMA. As new manufacturing guidelines become benchmarks for the industry, Amercool remains fully prepared to compete in domestic and foreign markets.

#### Amercool will continue to be the industry leader by providing customers with:

- Prompt, accurate quotes
- Flexibility in meeting their requirements
- High quality
- Low cost
- Prompt delivery
- Friendly service

#### STATE-OF-THE-ART TECHNOLOGY

Our job processing and release program is tied to our proposal program and operates at the same rapid pace. Approval drawings for most horizontal units can be sent out on the same day the order is received. We release the job for purchase and fabrication immediately upon receipt of customer approved drawings. When standard drawings alone are not sufficient, we can make 3-D models of your unique configurations, such as extensive walkway and recirculation designs, to ensure proper fit up in the field.

In a business environment historically challenged by major changes in industry and company structure, Amercool remains strong and stable as part of the Smith family of companies. Privately owned and operated, Smithco Engineering has been serving the industry since 1952. Amercool Manufacturing, together with Smithco Engineering, continues to be the leader in product manufacturing and customer service.

#### YOUR SUCCESS IS OUR SUCCESS

Our unrelenting pursuit of customer satisfaction positions us to remain the long-term industry leader in the heat transfer business. We are completely dedicated to delivering quality products that meet your specific needs at the highest value of ownership – on schedule and on budget. More than just equipment, we are a total solutions provider, with complete customer service and support. In short, we build long-term relationships, one cooler at a time.

